



Porter County *Sheriff's Office*

2017 ANNUAL ACTIVITY REPORT



Compiled By:
Sgt. Richard D. Howard

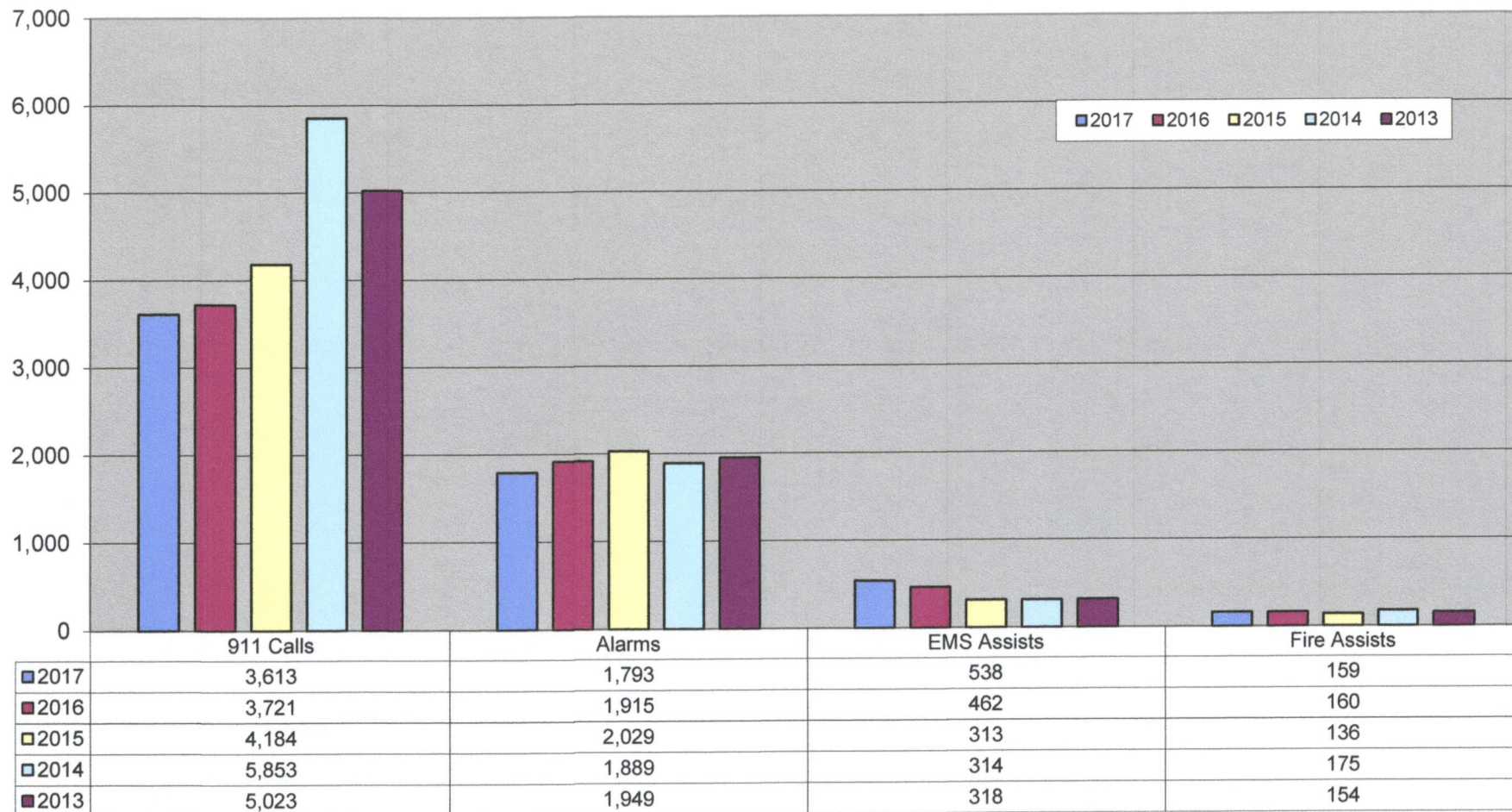
INCIDENTS AND REPORTS

		2017	2016	2015	2014	2013
Incidents						
911 Calls	-2.90%	3,613	3,721	4,184	5,853	5,023
Alarms	-6.37%	1,793	1,915	2,029	1,889	1,949
EMS Assists	16.45%	538	462	313	314	318
Fire Assists	-0.62%	159	160	136	175	154
Total	-2.48%	6,103	6,258	6,662	8,231	7,444
Reports						
		2017	2016	2015	2014	2013
Part 1 UCR	2.14%	669	655	654	724	1,023
Part 2 UCR	3.96%	1,997	1,921	1,608	1,656	1,730
Total	3.49%	2,666	2,576	2,262	2,380	2,753
Accidents						
		2017	2016	2015	2014	2013
Fatal	114.29%	15	7	9	9	6
Personal Injury	-9.55%	284	314	318	357	362
Property Damage	-2.69%	1,304	1,340	1,256	1,336	1,205
Hit & Run	-8.79%	83	91	78	81	75
Reported Unknown	22.22%	66	54	44	60	49
SR 21 Issued	#DIV/0!	2	0	2	5	4
Total	-2.88%	1,754	1,806	1,707	1,848	1,701
Traffic Incidents						
		2017	2016	2015	2014	2013
Suspicious Person/Vehicle	5.00%	2,434	2,318	2,347	2,592	2,972
Reckless Driving Complaints	14.56%	1,495	1,305	1,349	1,317	1,659
DUI Complaints	-38.46%	16	26	21	39	46
Traffic Stops	20.71%	15,083	12,495	10,101	12,738	17,558
Subject Stops	-42.31%	15	26	33	65	59
Other * See Footnote	-10.69%	1,587	1,777	1,817	2,600	2,488
Total	14.95%	20,630	17,947	15,668	19,351	24,782
Grand Total		31,153	28,587	26,299	31,810	36,680
Police Incidents						
		2017	2016	2015	2014	2013
Total PCSP Incidents	6.74%	40,103	37,571	35,671	41,281	48,303

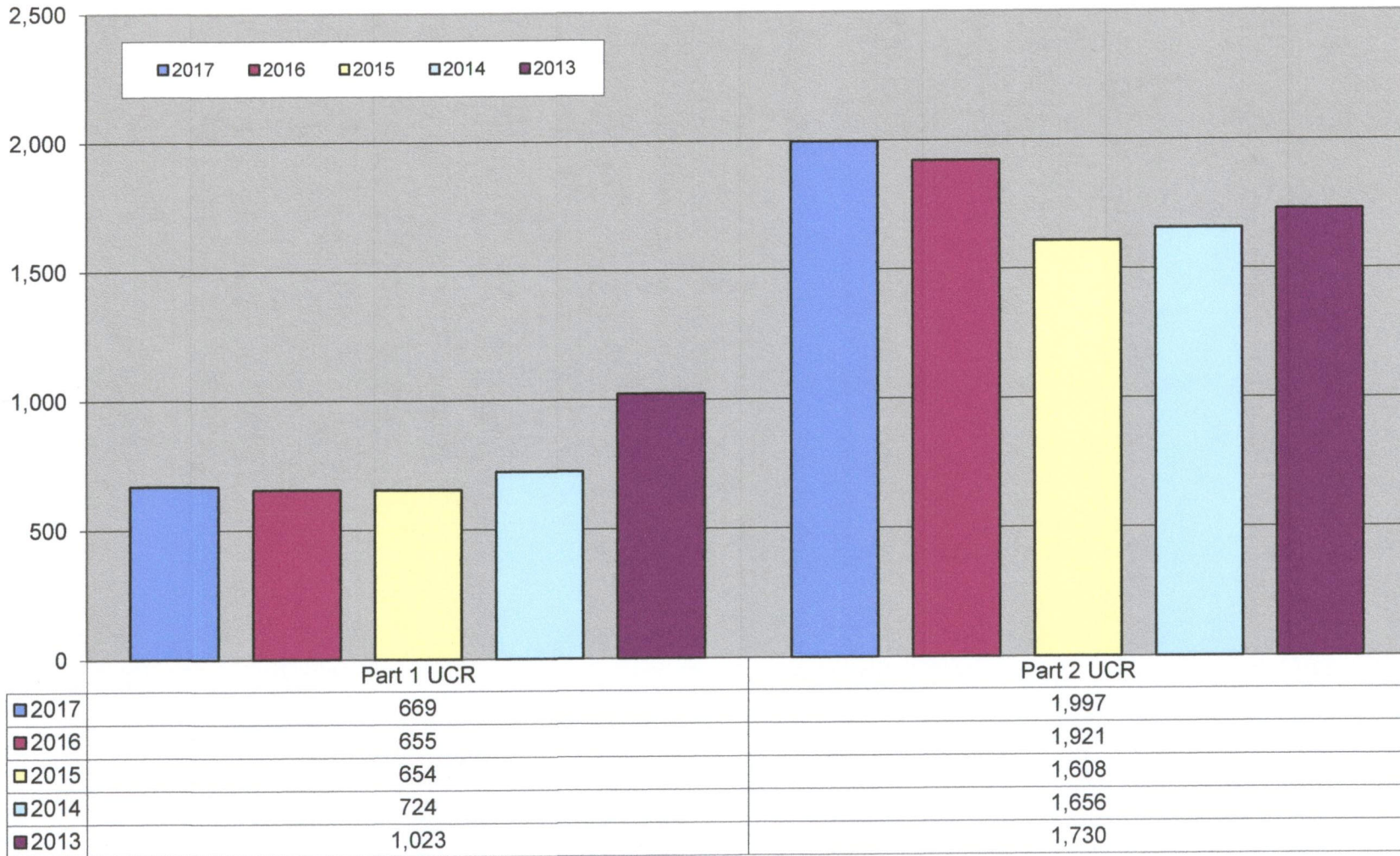
* Other Category

- Abandoned Vehicles
- Blocked RR
- Obstruction in Roadway
- Extra Patrol Request
- Blood Run
- Vehicle Impound
- Vehicle Tagged

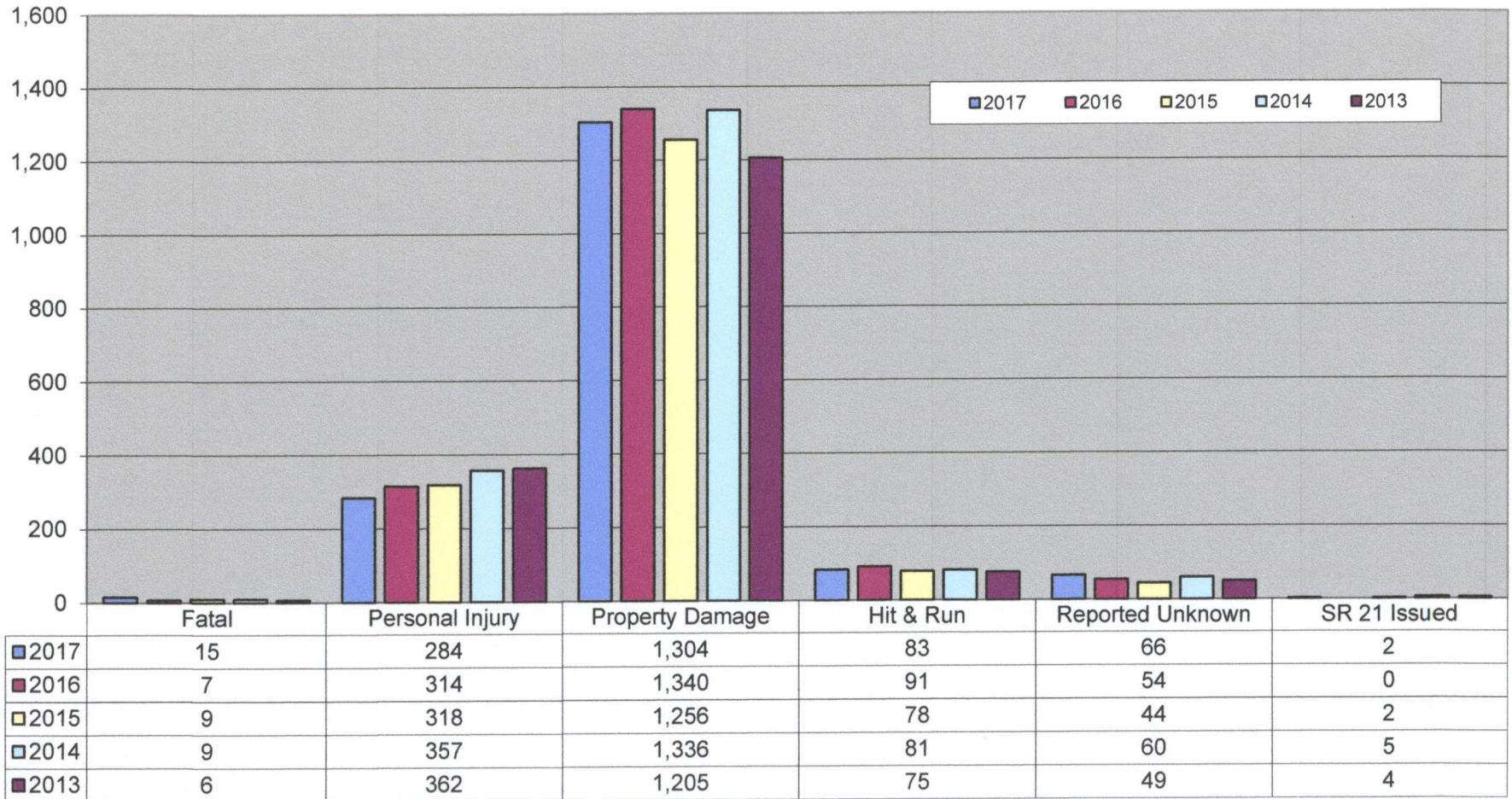
Incidents 2013-2017



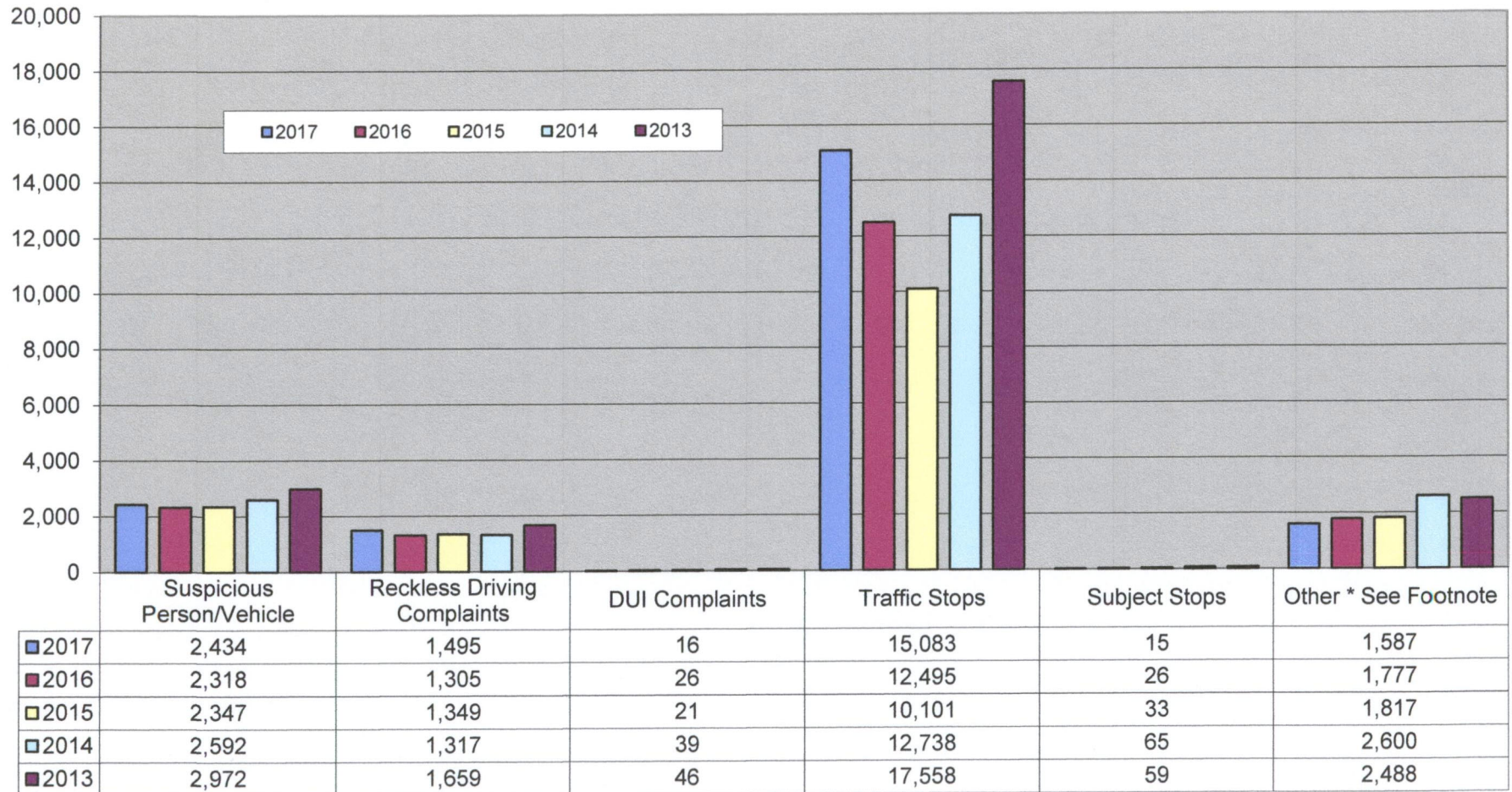
Case Reports 2013-2017



Crash Reports 2013-2017



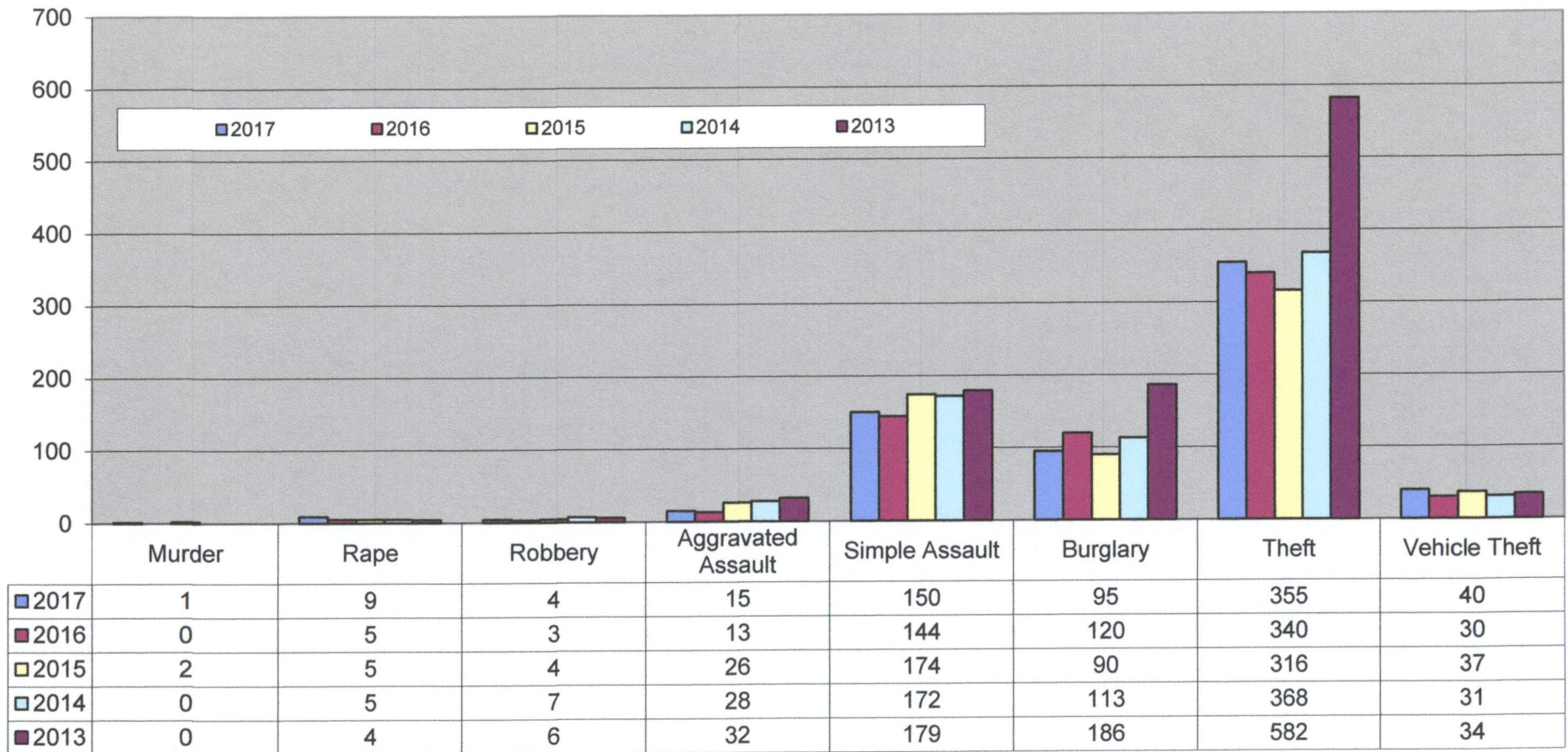
Traffic Incidents 2013-2017



UCR Part 1 Crimes Reported

		2017	2016	2015	2014	2013
Murder		1	0	2	0	0
Rape	80.00%	9	5	5	5	4
Robbery	33.33%	4	3	4	7	6
Aggravated Assault	15.38%	15	13	26	28	32
Simple Assault	4.17%	150	144	174	172	179
Burglary	-20.83%	95	120	90	113	186
Theft	4.41%	355	340	316	368	582
Vehicle Theft	33.33%	40	30	37	31	34
Total	2.14%	669	655	654	724	1,023

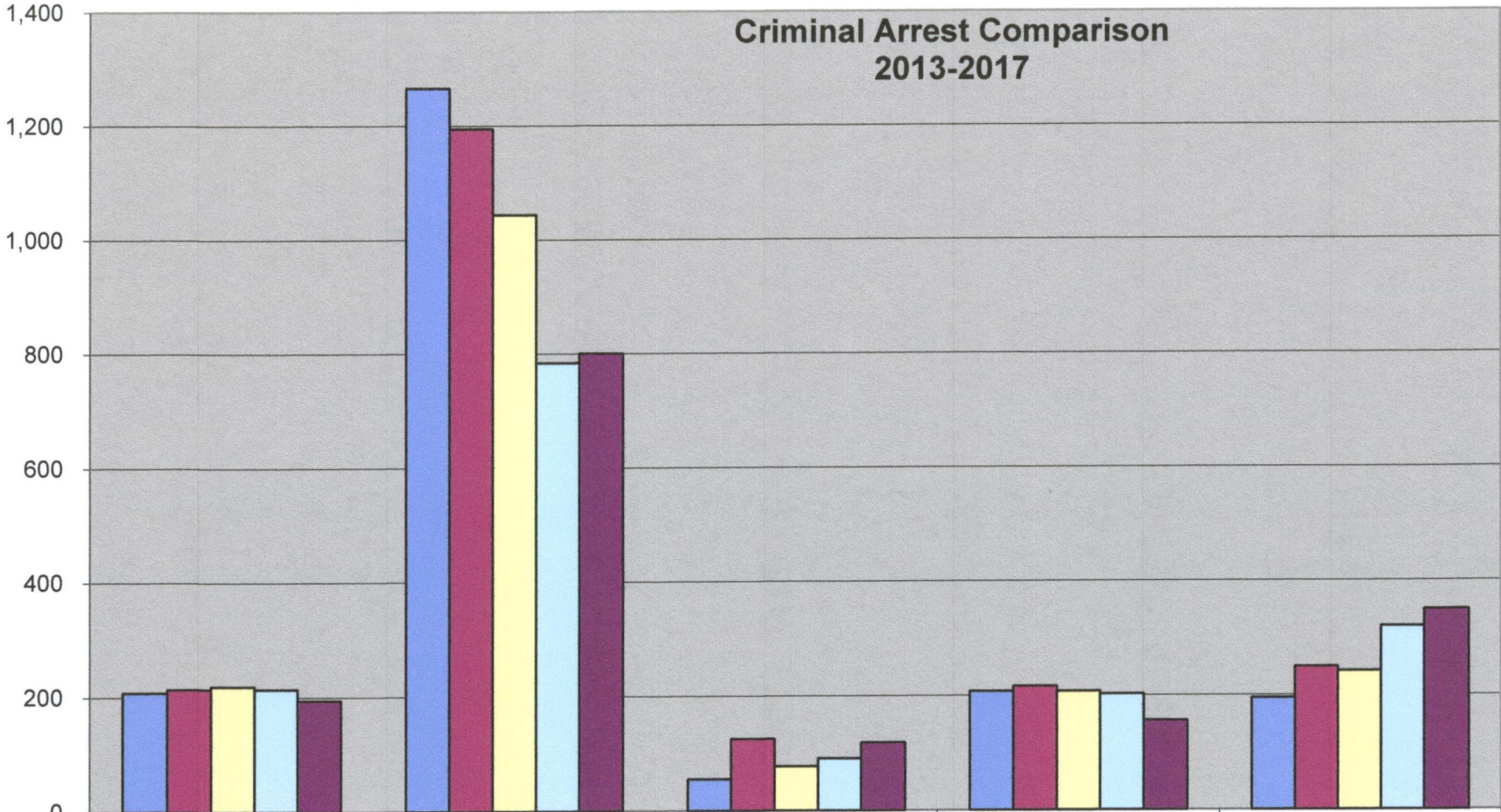
UCR Part 1 Crimes Reported 2013-2017



ARRESTS

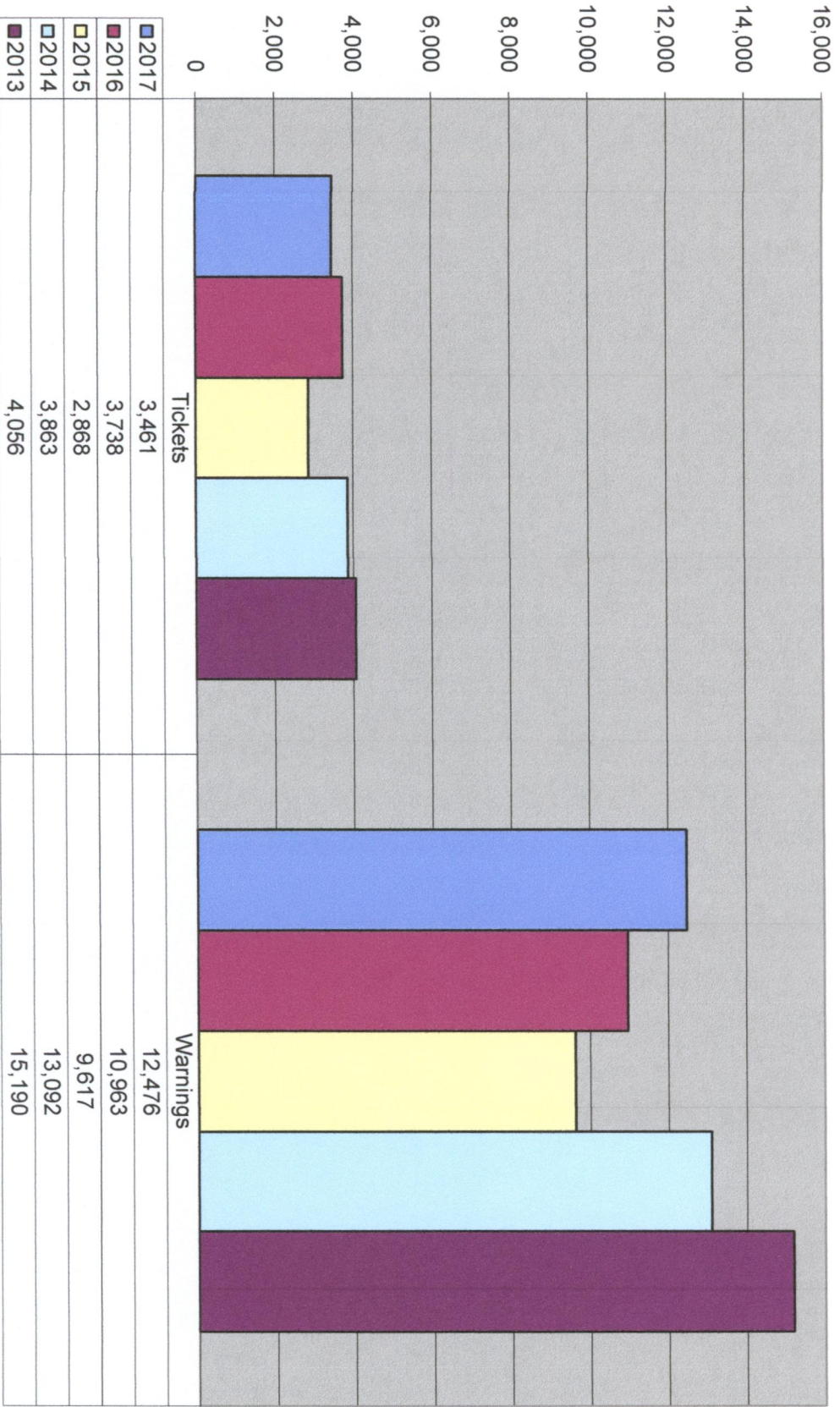
		2017	2016	2015	2014	2013
Criminal Arrest						
Part 1 UCR	-2.80%	208	214	219	214	194
Part 2 UCR	5.94%	1,266	1,195	1,044	784	800
Alcohol Related (Except DUI)	-56.00%	55	125	77	91	118
Drug Related	-4.17%	207	216	207	202	156
DUI	-21.69%	195	249	242	320	349
Total	-3.40%	1,931	1,999	1,789	1,611	1,617
		2017	2016	2015	2014	2013
Traffic Arrest						
Tickets	-7.41%	3,461	3,738	2,868	3,863	4,056
Warnings	13.80%	12,476	10,963	9,617	13,092	15,190
Total	8.41%	15,937	14,701	12,485	16,955	19,246
Grand Total		6.99%	17,868	16,700	14,274	18,566
						20,863

Criminal Arrest Comparison 2013-2017



	Part 1 UCR	Part 2 UCR	Alcohol Related (Except DUI)	Drug Related	DUI
■ 2017	208	1,266	55	207	195
■ 2016	214	1,195	125	216	249
■ 2015	219	1,044	77	207	242
■ 2014	214	784	91	202	320
■ 2013	194	800	118	156	349

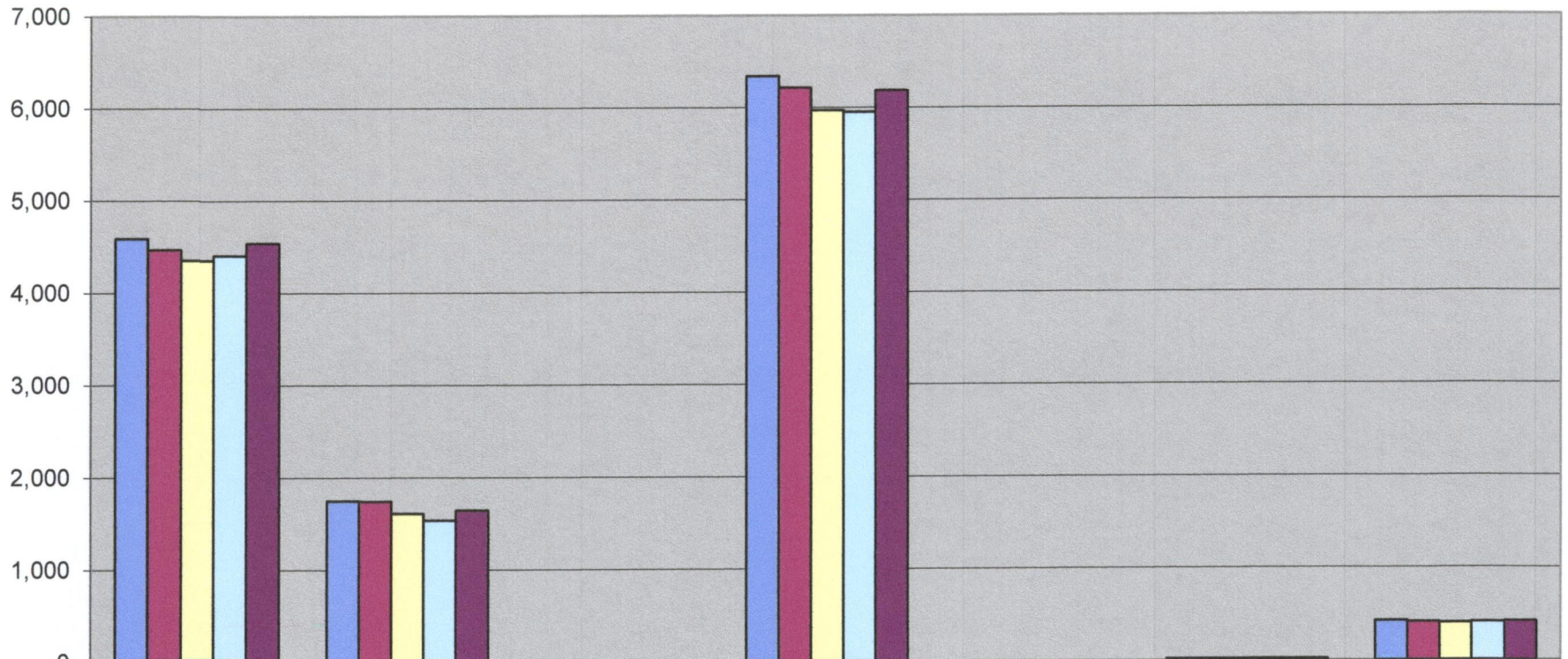
Traffic Arrest Comparison 2013 - 2017



Jail Booking Activity

		2017	2016	2015	2014	2013
Males	2.71%	4,589	4,468	4,355	4,406	4,537
Females	0.23%	1,747	1,743	1,611	1,538	1,644
Juveniles	-33.33%	2	3	2	7	2
Total	2.00%	6,338	6,214	5,968	5,951	6,183
Average Daily Bookings	2.25%	17.36	16.98	16.35	16.30	16.94
Average Daily Count	3.16%	424	411	401	411	416

Jail Booking Activity 2013-2017



	Males	Females	Juveniles	Total		Average Daily Bookings	Average Daily Count
■ 2017	4,589	1,747	2	6,338		17.36	424
■ 2016	4,468	1,743	3	6,214		16.98	411
■ 2015	4,355	1,611	2	5,968		16.35	401
■ 2014	4,406	1,538	7	5,951		16.30	411
■ 2013	4,537	1,644	2	6,183		16.94	416